

# Retrograde Analysis

Prepared by Mark on June 5, 2026  
 Based on books<sup>1</sup> by Raymond Smullyan

## Part 1: Introduction

To solve the problems in this handout, you mustn't be a chess master—you just need to know how the pieces move. I'd expect that you're all familiar with the basic rules of chess (ask questions if you aren't!). The odd ones are listed below.

### Board orientation:

The bottom-left square of a chessboard is *always* black.

### Starting pawns & en passant:

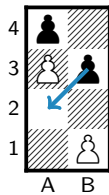
A pawn may move two squares on its first turn.

An opposing pawn may capture this pawn as it completes this move.

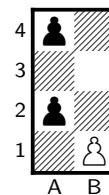
This is called an *en passant* capture (Which means "in passing" in French)



White moves two squares



Black captures en passant



Result

### Promotion:

When a pawn reaches the last row of the board, it may be promoted to any other piece. (Except a king or a pawn, of course.)

### Castling:

A king and rook can *castle* under the following conditions:

- No pieces are in the way
- The king has not yet moved
- The rook has not yet moved
- The king is not in check
- The king does not move through check while castling



Possible castle directions



Queenside castle result



Kingside castle result

<sup>1</sup> Most of the easy problems in this handout are from *The Chess Mysteries of Sherlock Holmes*. The rest are from *The Chess Mysteries of the Arabian Knights*.

## Part 2: Simple problems

### Problem 1: A little exercise

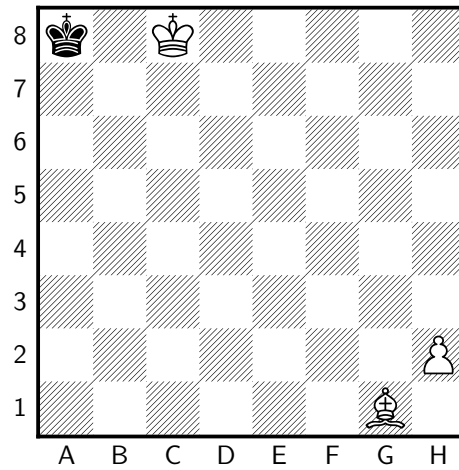
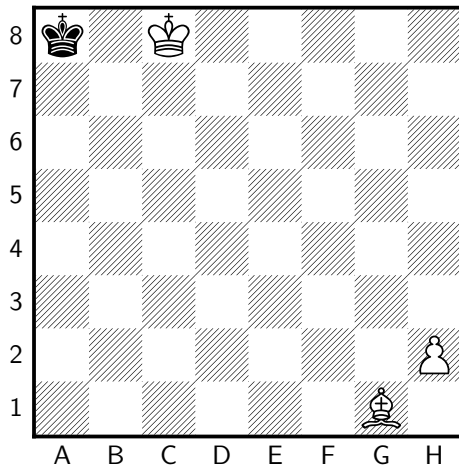
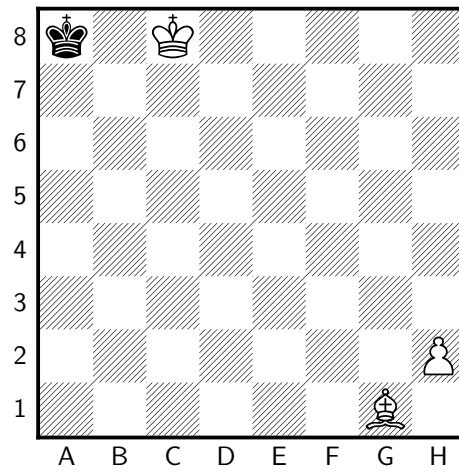
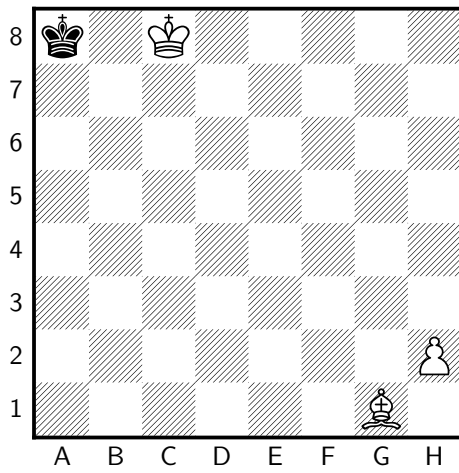
Difficulty: ★★★★★

Black has just moved in the game below. White started on the south side of the board.

What was Black's last move, and what was White's last move?

*Note:* The boards below are identical copies. Scribble to your heart's content.

There are a few empty boards at the end of this handout as well.

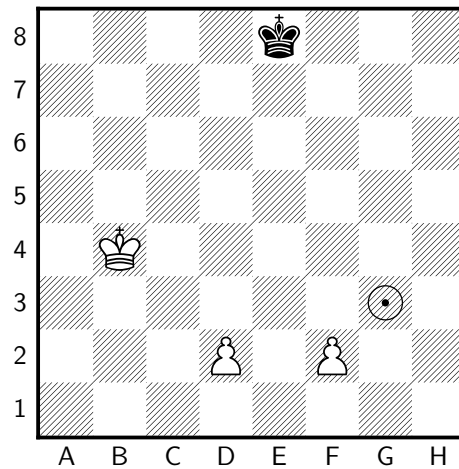
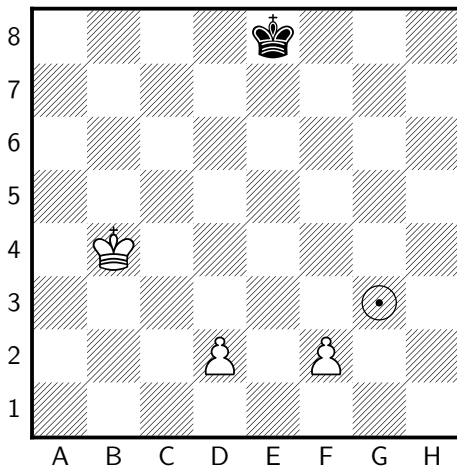
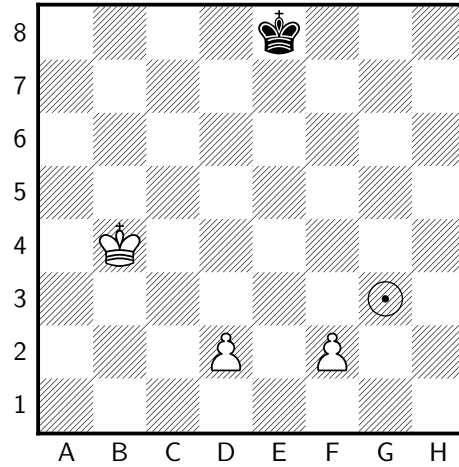
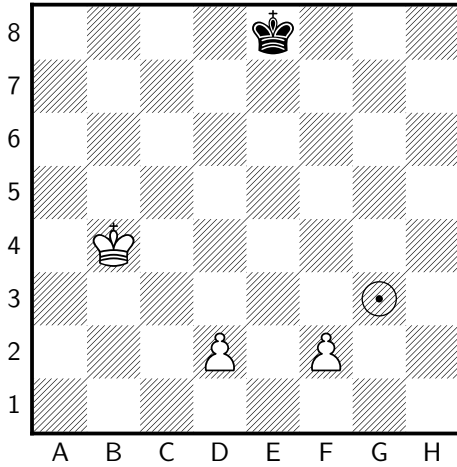


**Problem 2: Which color?**

Difficulty: ★★☆☆☆

In the game below, no pieces have moved from a black square to a white square, or from a white square to a black square. There is a pawn at G3. What color is it?

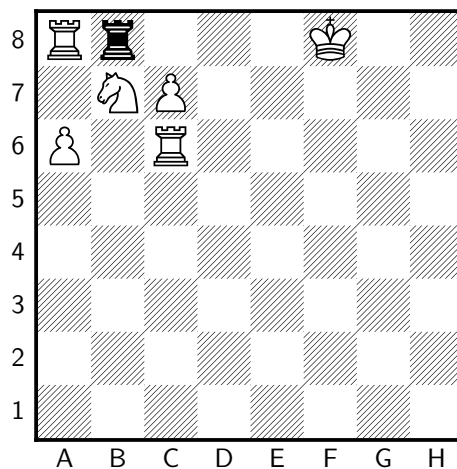
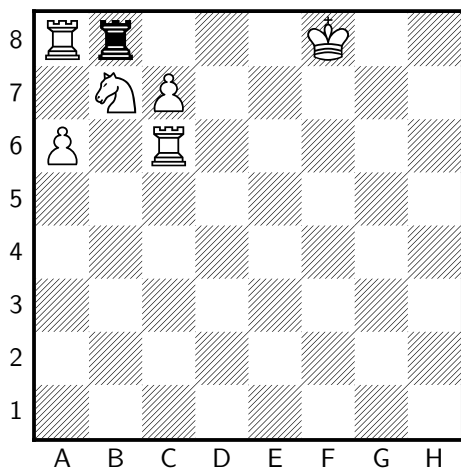
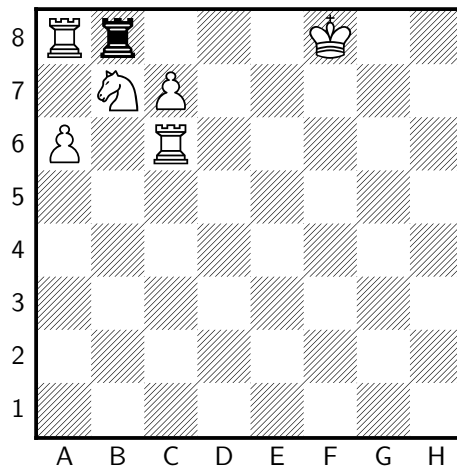
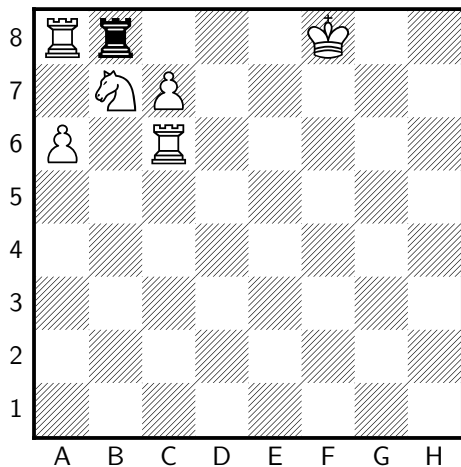
As before, White started on the bottom of the board.



**Problem 3: Invisible, but not invincible**

Difficulty: ★★☆☆☆

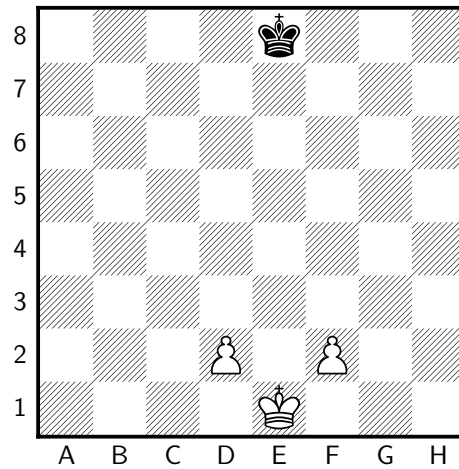
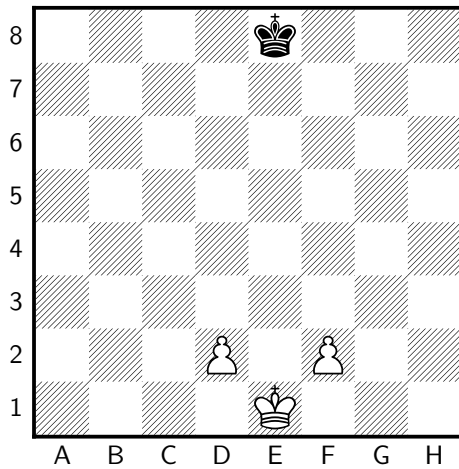
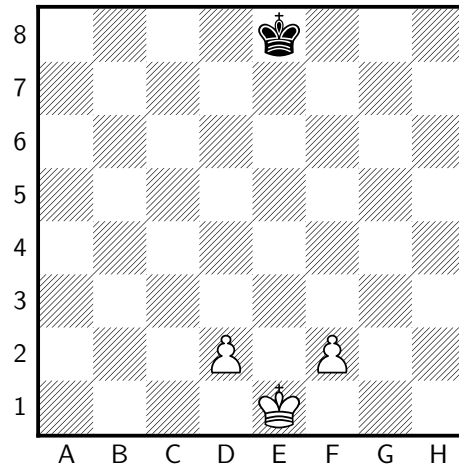
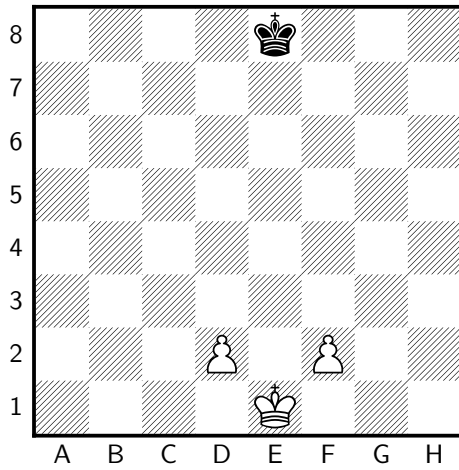
The black king has turned himself invisible. Unfortunately, his position is hopeless. Mate the king in one move.



**Problem 4: An empty board**

Difficulty: ★★☆☆☆

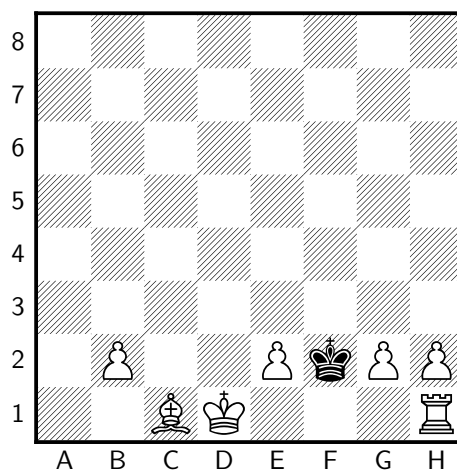
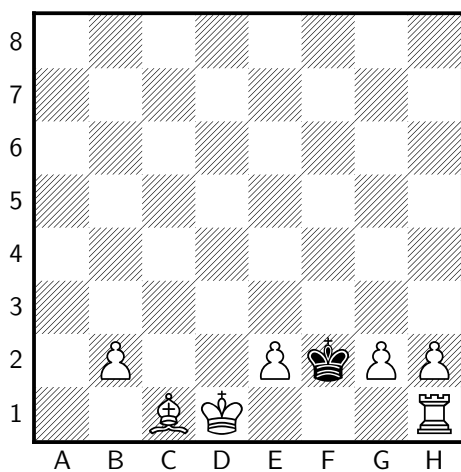
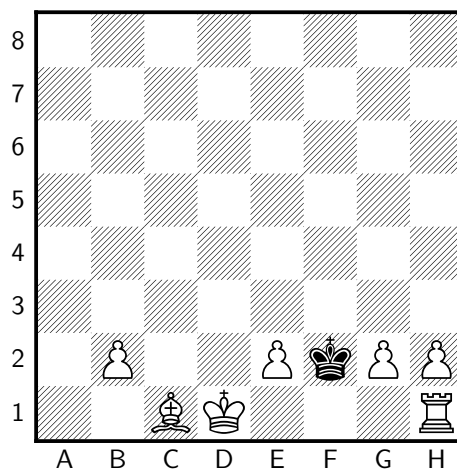
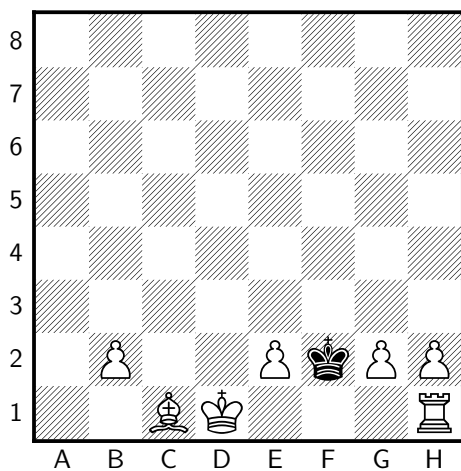
In the game below, no pieces have moved from a black square to a white square, or from a white square to a black square. There is one more piece on the board, which isn't shown. What color square does it stand on?



**Problem 5: Promotion?**

Difficulty: ★★☆☆☆

It is White's move. Have there been any promotions this game?

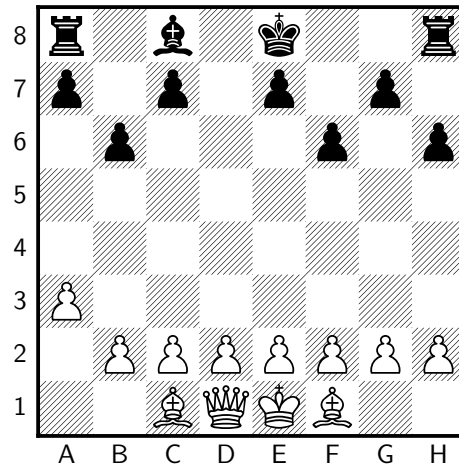
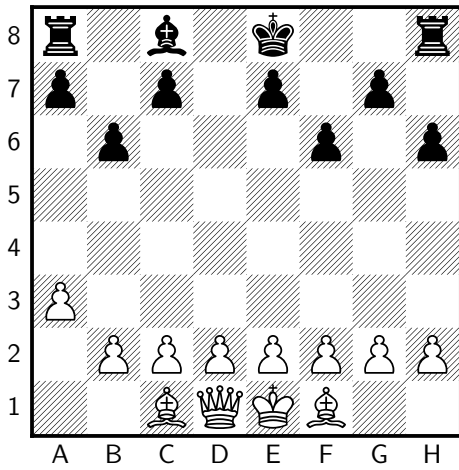
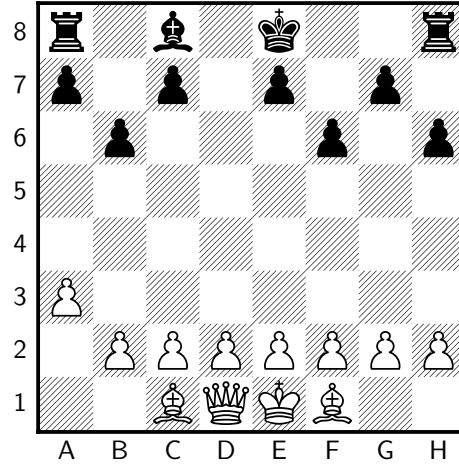
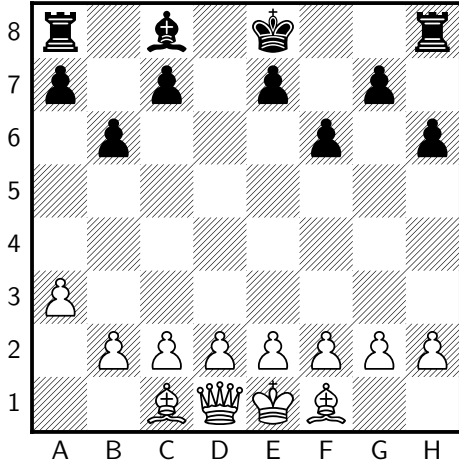


**Problem 6: Whodunit**

Difficulty: ★★☆☆☆

It is Black's move. Can Black castle?

*Hint:* Remember the rules of chess: you may not castle if you've moved your rook.

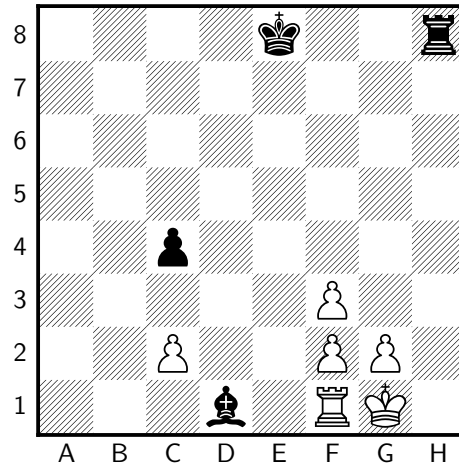
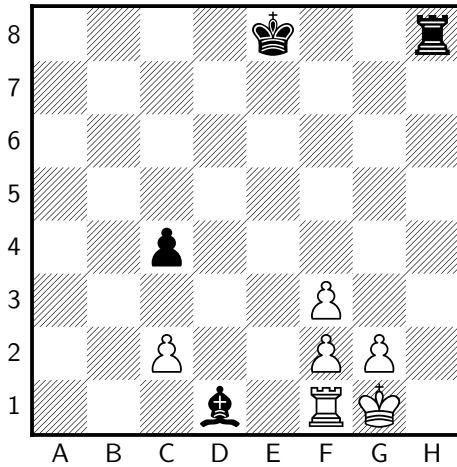
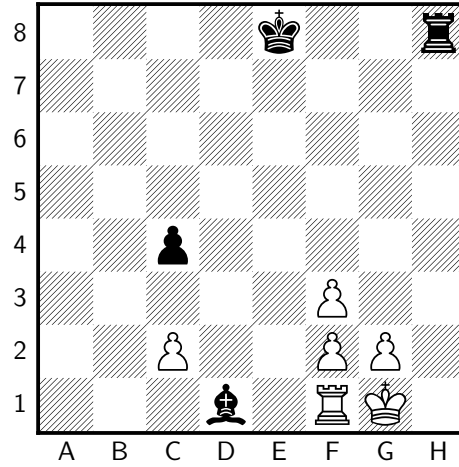
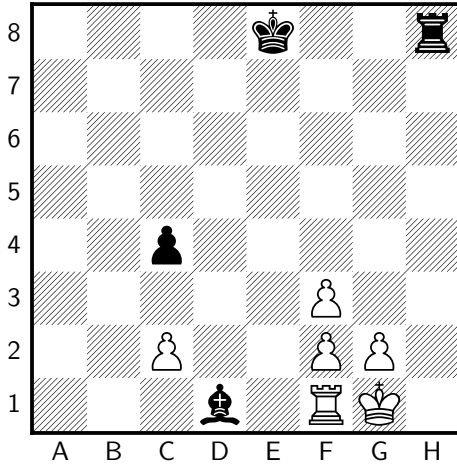


**Problem 7: Castle contradiction**

Difficulty: ★★☆☆☆

Neither Black nor White captured a piece on their last move.  
It is Black's move. Show that he cannot castle?

*Hint: What was White's last move? Check the cases.*

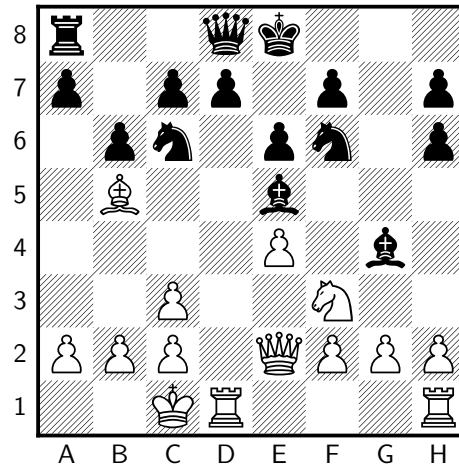
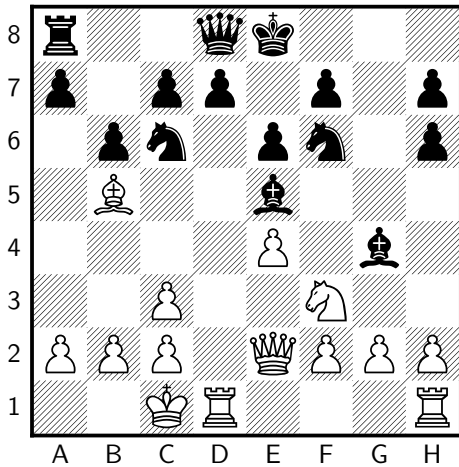
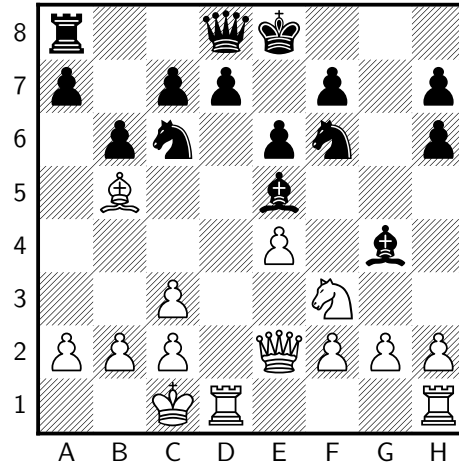
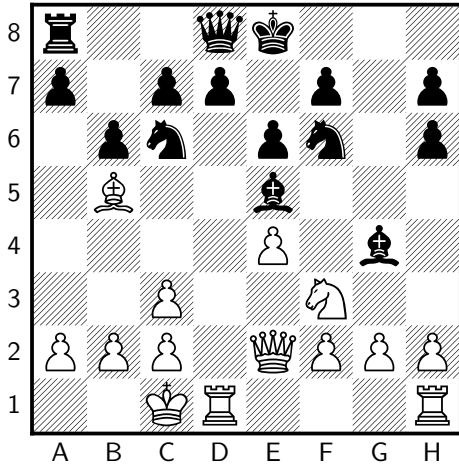


**Problem 8: A matter of order**

Difficulty: ★★☆☆☆

A black bishop captured a White piece earlier in this game.  
Which bishop was it, and what did it capture?

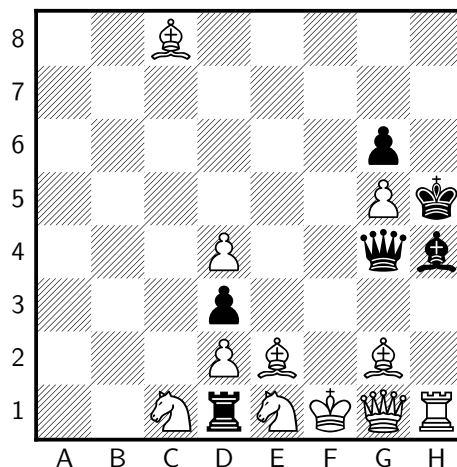
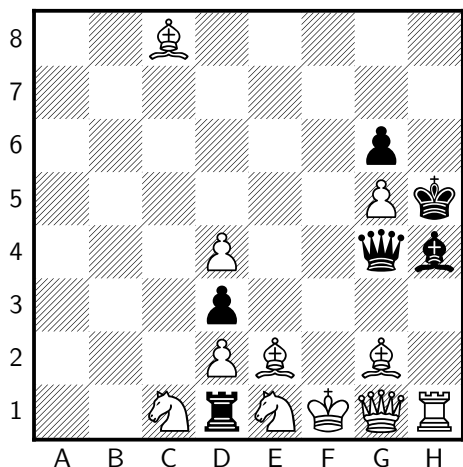
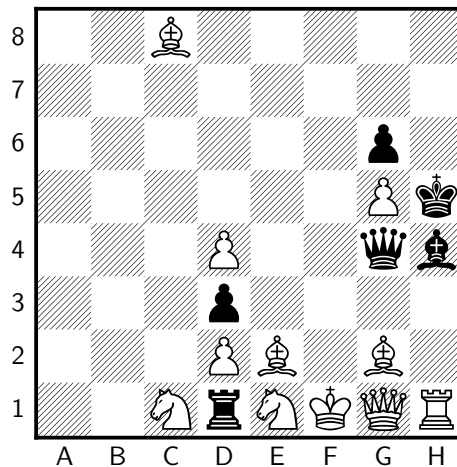
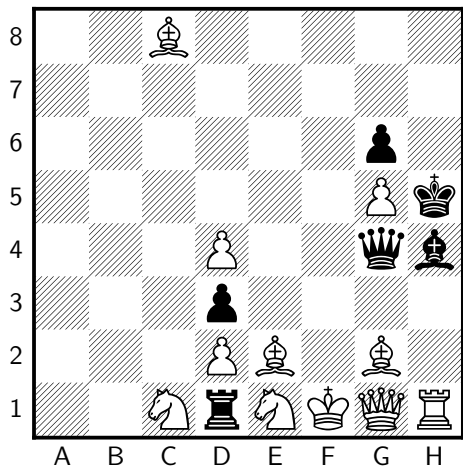
*Hint: Black and White start with 16 pieces each.*



**Problem 9: Moriarty's first**

Difficulty: ★★☆☆☆

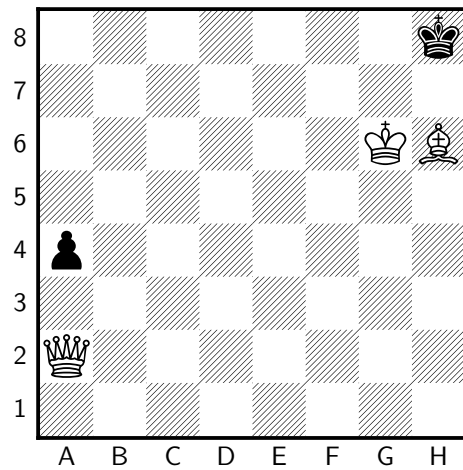
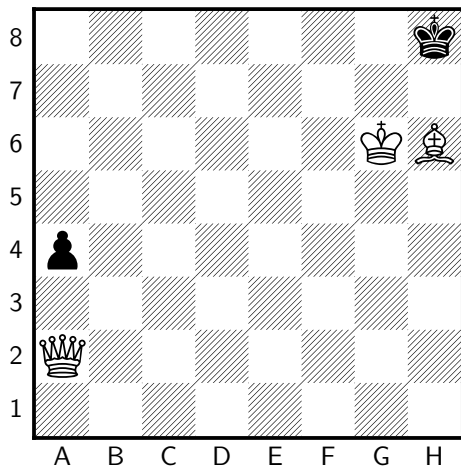
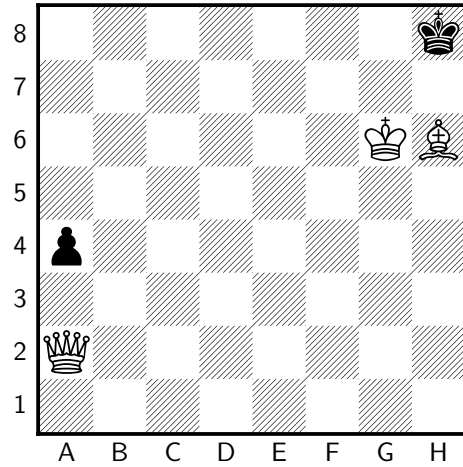
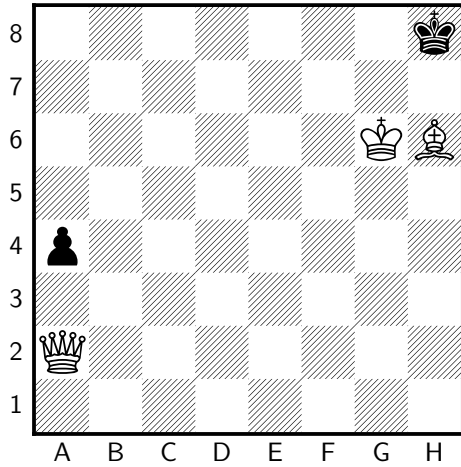
No captures have been made in the last four moves.  
It is White's move. What was the previous move?



**Problem 10: Moriarty's second**

Difficulty: ★★☆☆☆

Neither the White king nor queen has moved during the last five moves, nor has any piece been captured during that time. What was the last move?



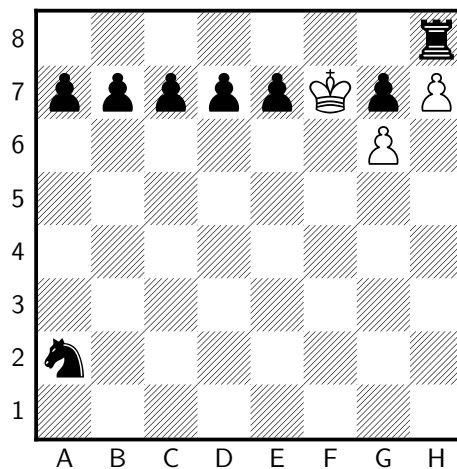
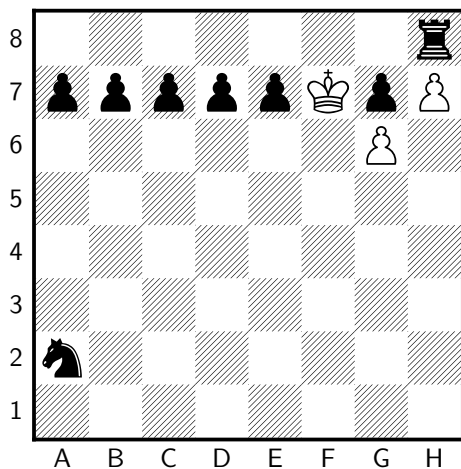
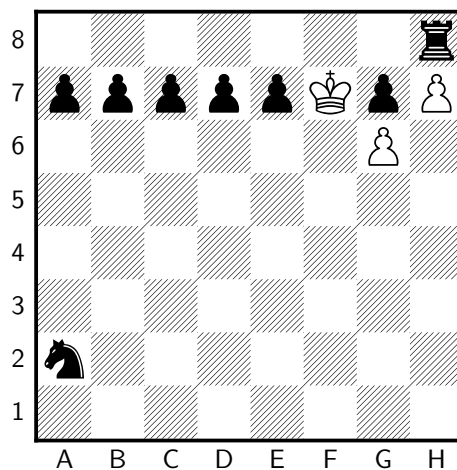
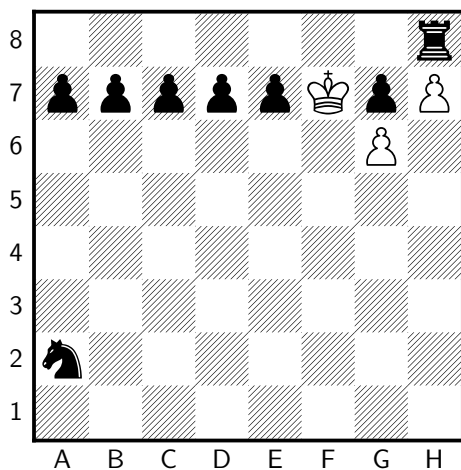
**Problem 11: Moriarty's third**

Difficulty: ★★☆☆☆

No pawn has moved, nor has any piece been captured in the last five moves.

The Black king has been accidentally knocked off the board.

On what square should he stand?



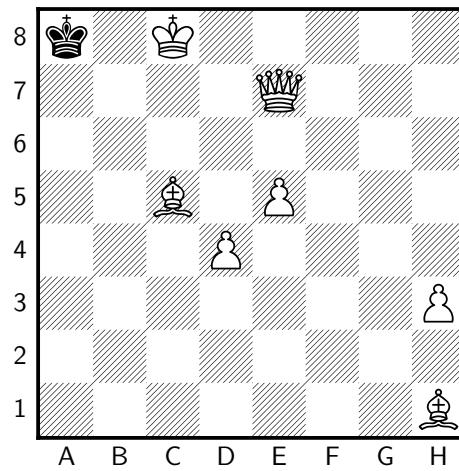
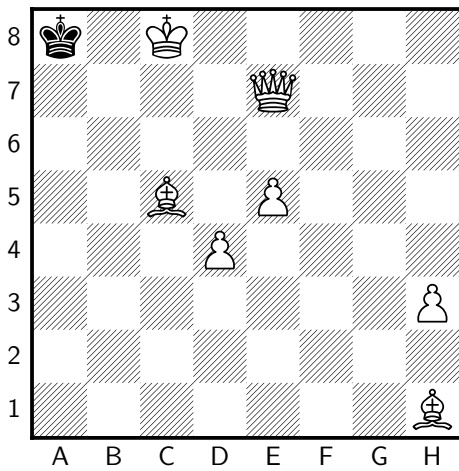
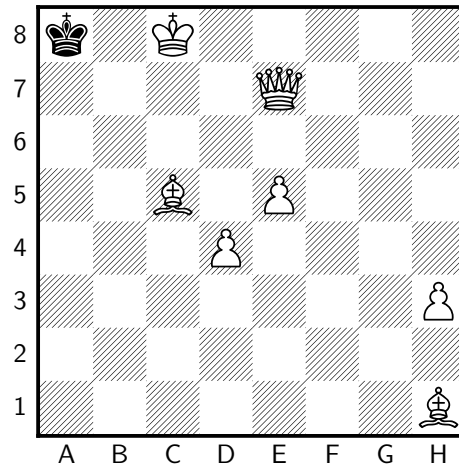
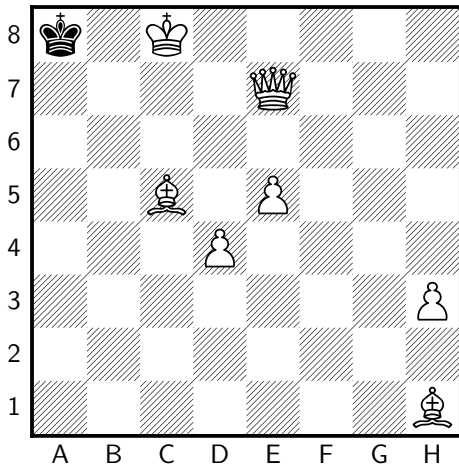
### Part 3: Slightly harder problems

#### Problem 12: A matter of direction

Difficulty: ★★☆☆☆

The results of a game of chess are shown below.

Did White start on the north or south side of the board?

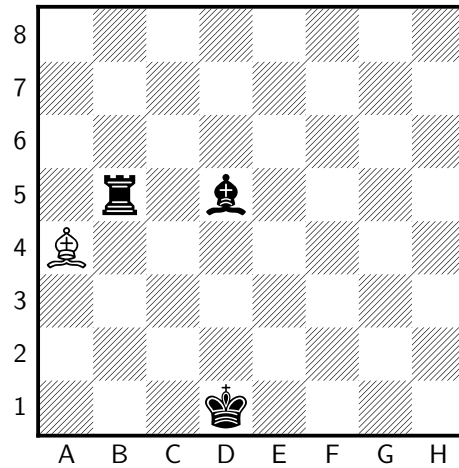
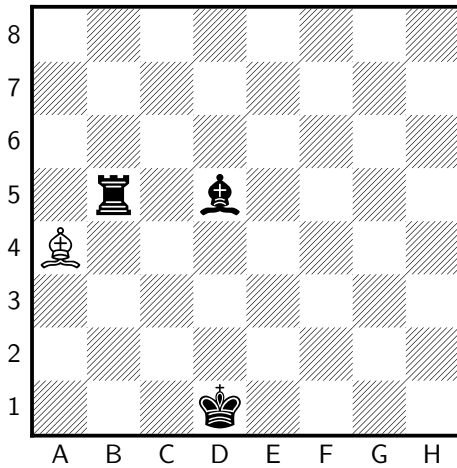
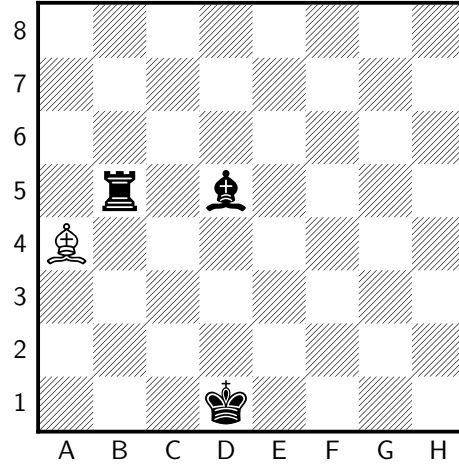
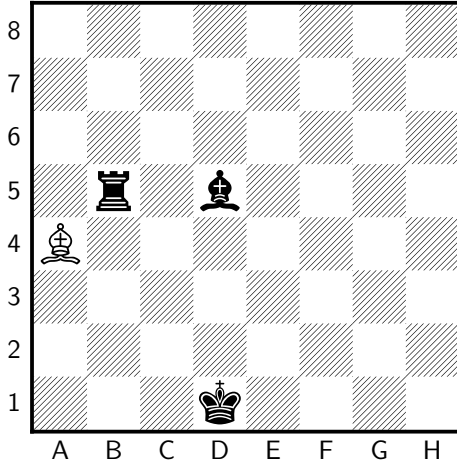


**Problem 13: Where is the king?**

Difficulty: ★★☆☆☆

The white king has again become invisible. Find him.

*Hint: White started on the bottom. En passant.*

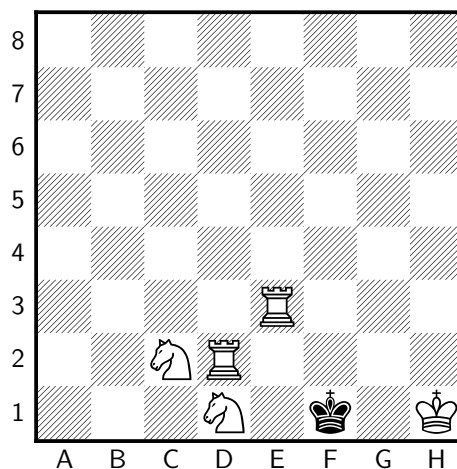
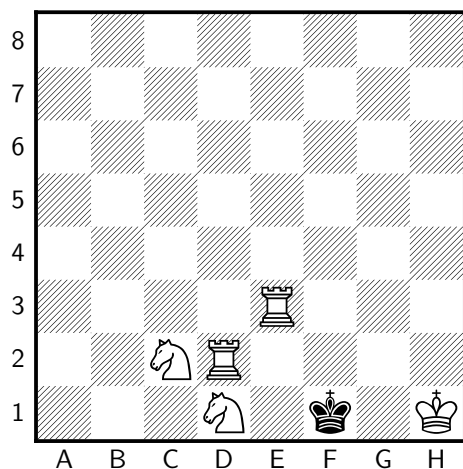
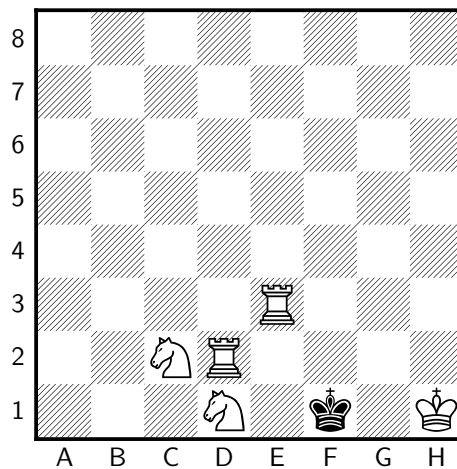
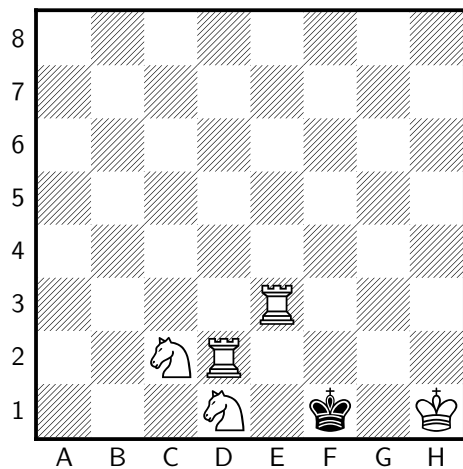


**Problem 14: Double-checks**

Difficulty: ★★☆☆☆

White to move. Which side of the board did each color start on?

*Hint: What was Black's last move?*

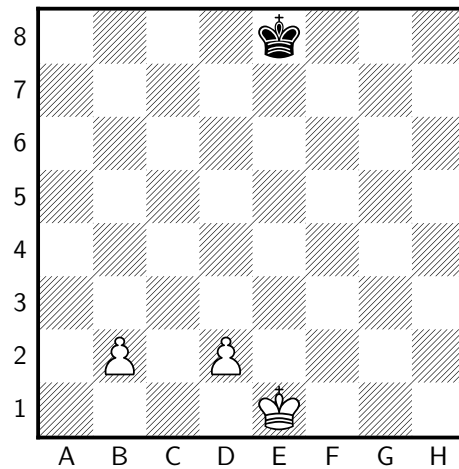
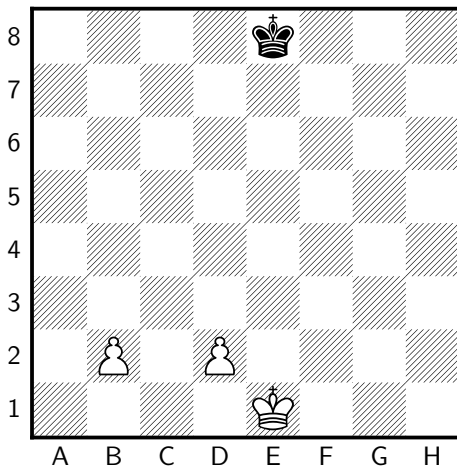
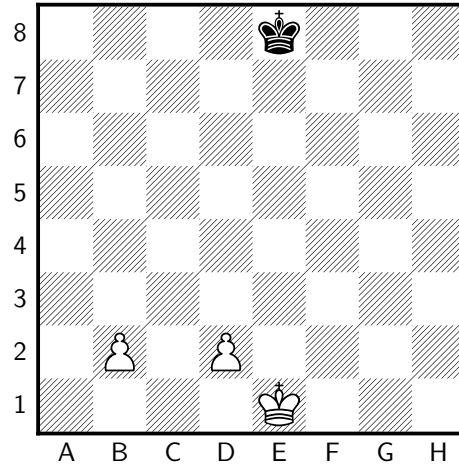
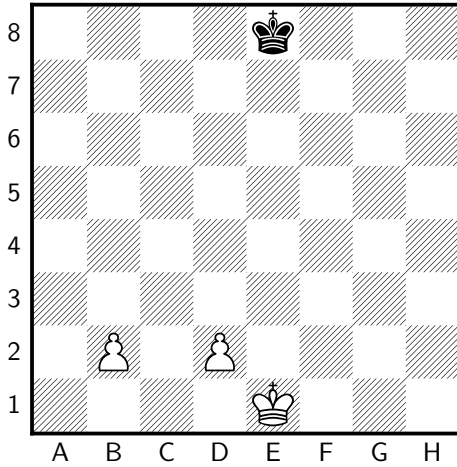


**Problem 15: Monochromatic**

Difficulty: ★★★★★

In the game below, no pieces have moved from a black square to a white square or from a white square to a black square. The white king has made fewer than fourteen moves.

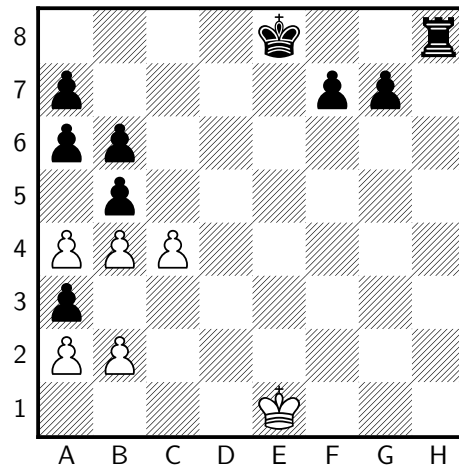
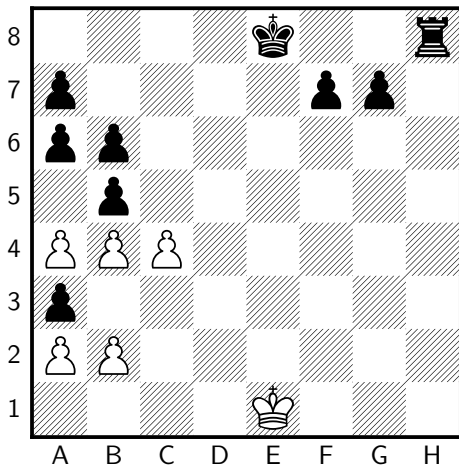
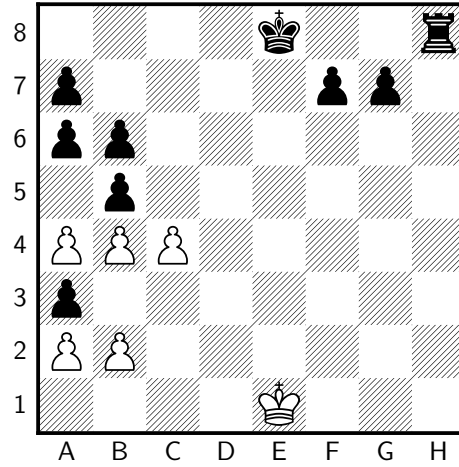
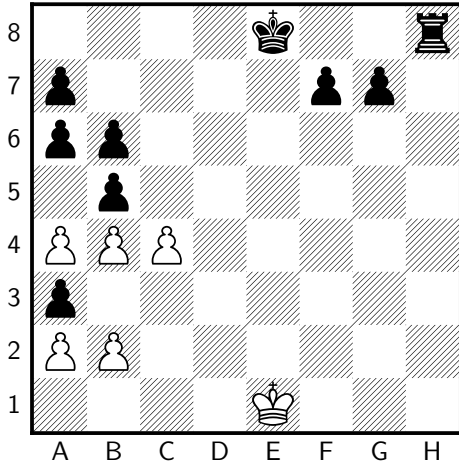
Use this information to show that a pawn was promoted.



**Problem 16: Superposition**

Difficulty: ★★★★★

A white pawn is missing; it is either on F2 or G2.  
Where is it?



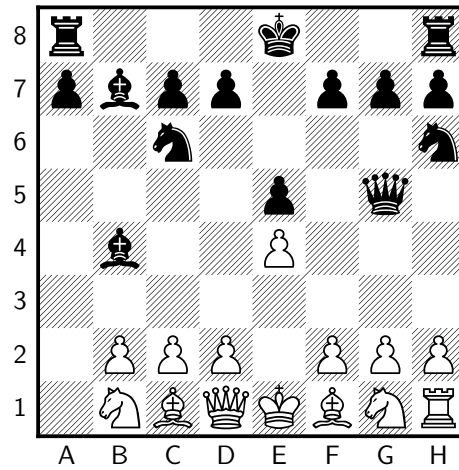
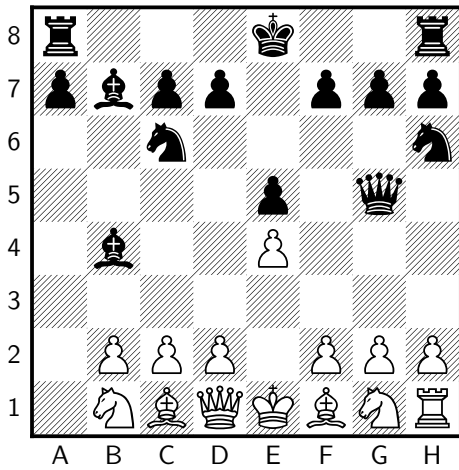
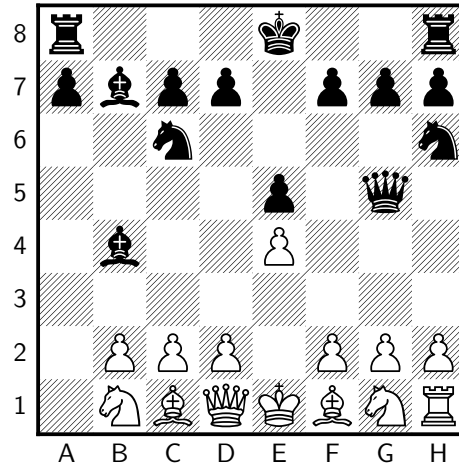
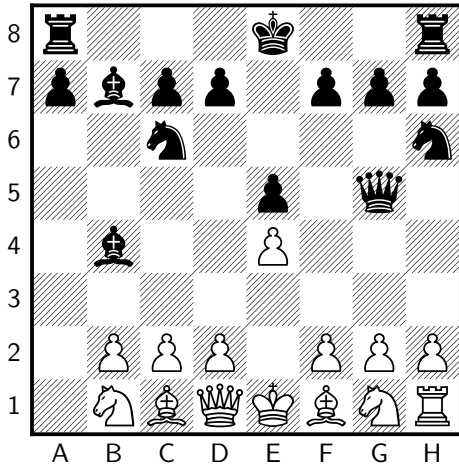
**Problem 17: Possibility**

Difficulty: ★★★★★

Show that black can castle to either side.

We know the following:

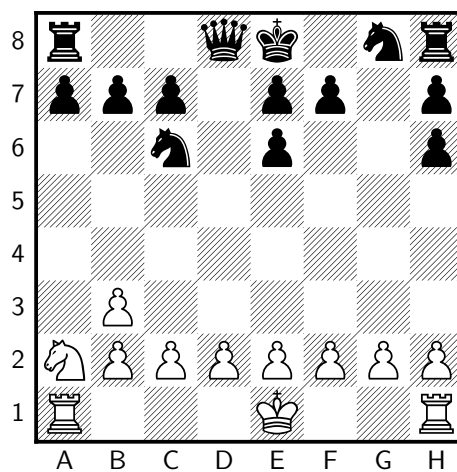
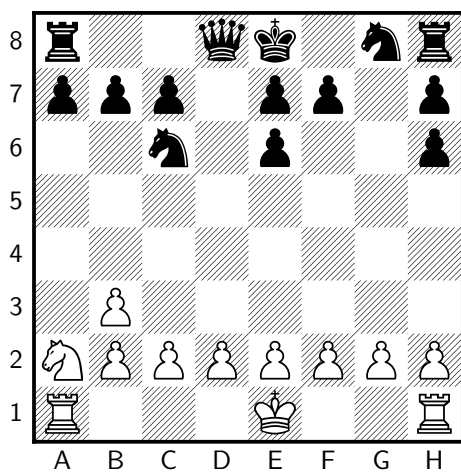
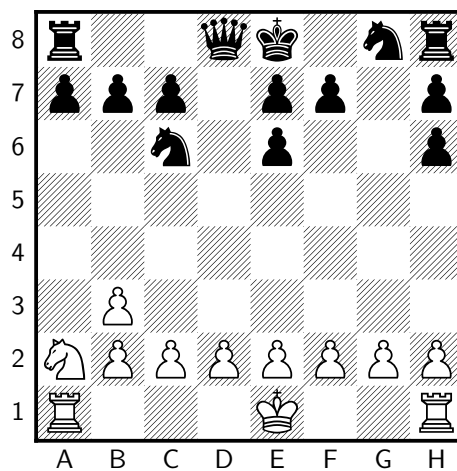
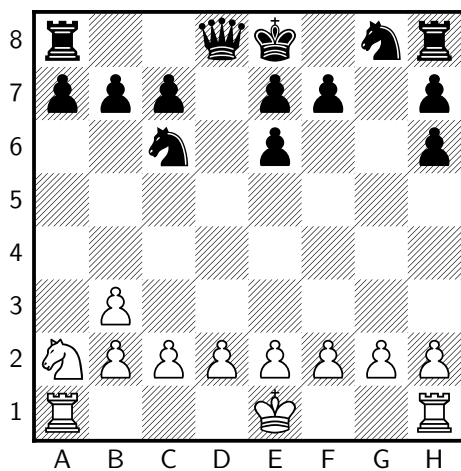
- White started the game missing one rook.
- White has not moved either knight
- No promotions have been made
- White's last move was from E2 to E4.



### Problem 18: Kidnapping

Difficulty: ★★★★★

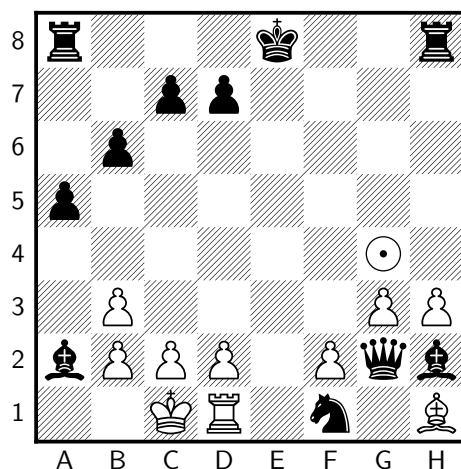
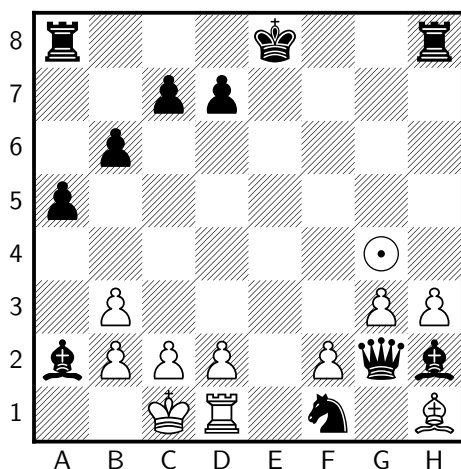
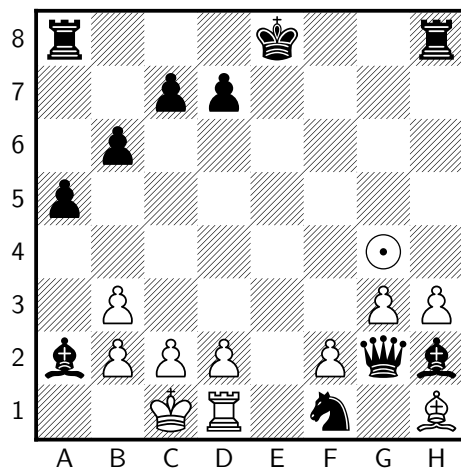
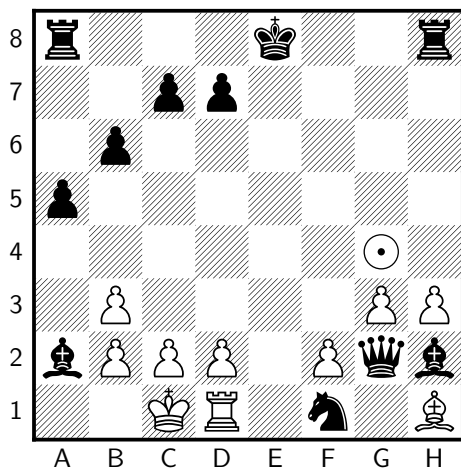
On which square was the White queen captured?.



**Problem 19: A missing piece**

Difficulty: ★★★★★★

There is a piece at G4, marked with a ⊙.  
What is it, and what is its color?

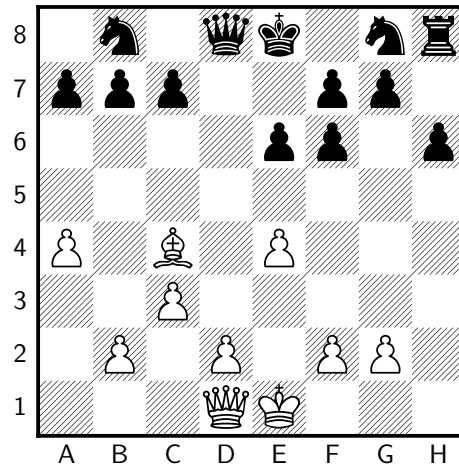
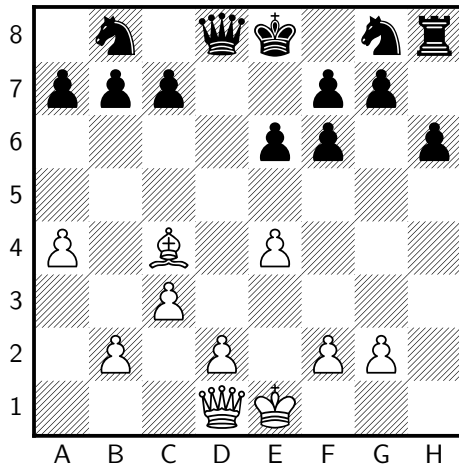
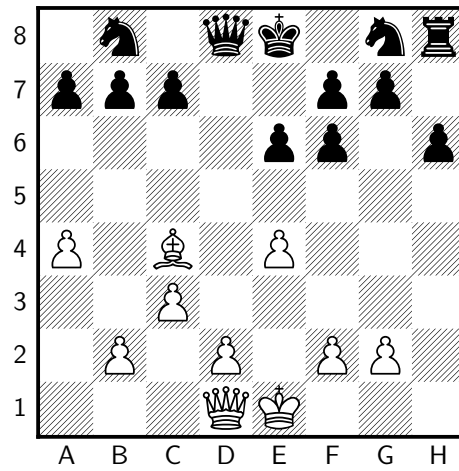
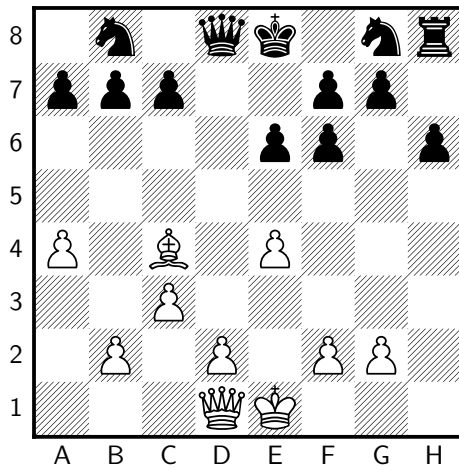


## Part 4: Very difficult problems

### Problem 20: The hidden castle

Difficulty: ★★★★★★★★

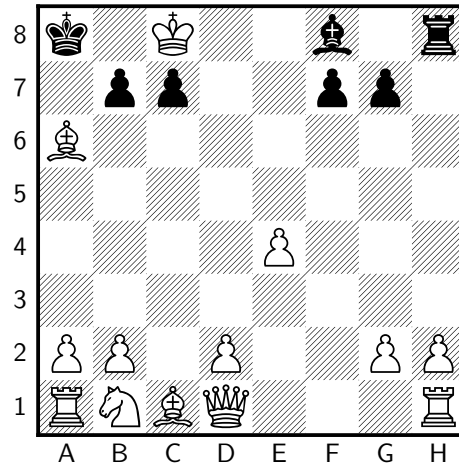
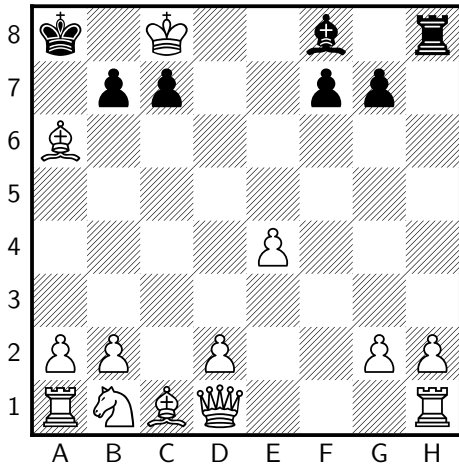
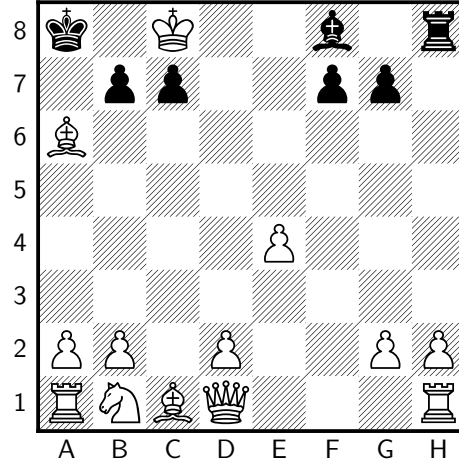
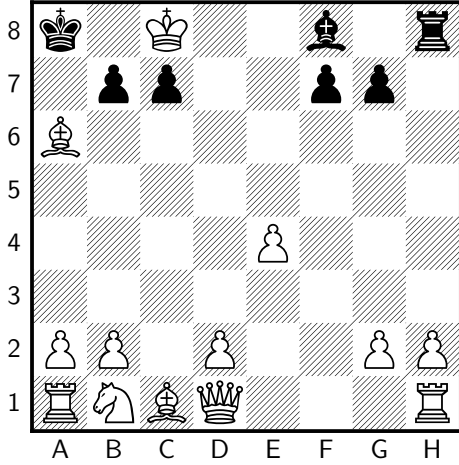
There is a white castle hidden on this board. Where is it?  
None of the royalty has moved or been under attack.



**Problem 21: Who moved last?**

Difficulty: ★★★★★★★

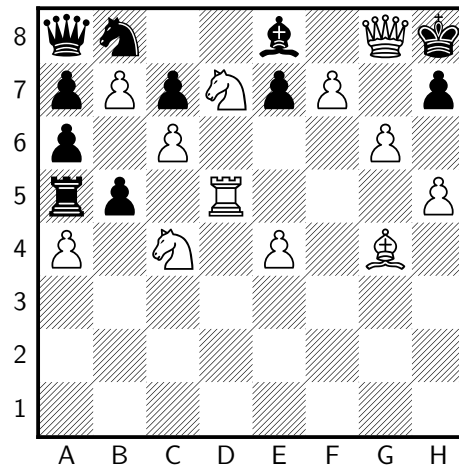
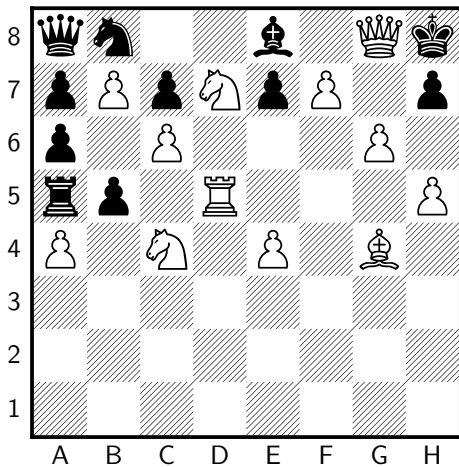
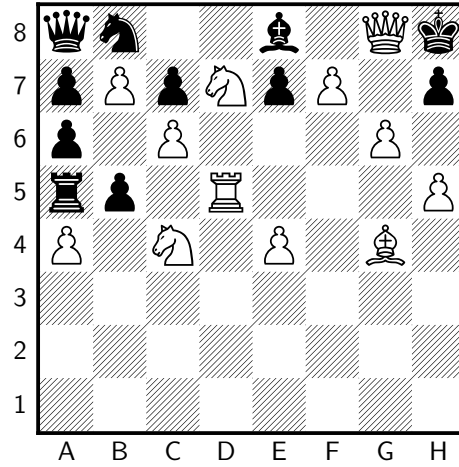
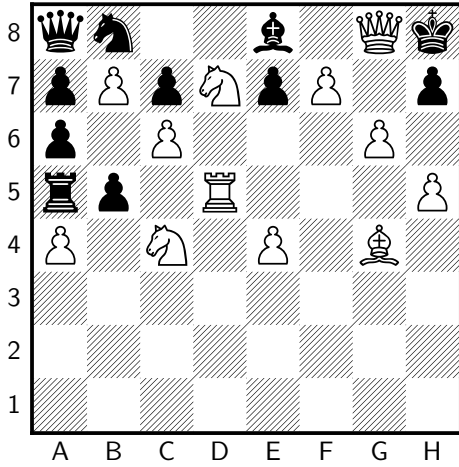
After many moves of chess, the board looks as follows.  
Who moved last?



**Problem 22: The king in disguise**

Difficulty: ★★★★★★★★

The white king is exploring his kingdom under a disguise. He could look like any piece of any color. Show that he must be on C7.



**Problem 23: The king in disguise once more**

Difficulty: ★★★★★★

The white king is again exploring his kingdom, now under a different disguise. Where is he?

*Hint: "different disguise" implies that the white king looks like a different piece!*

